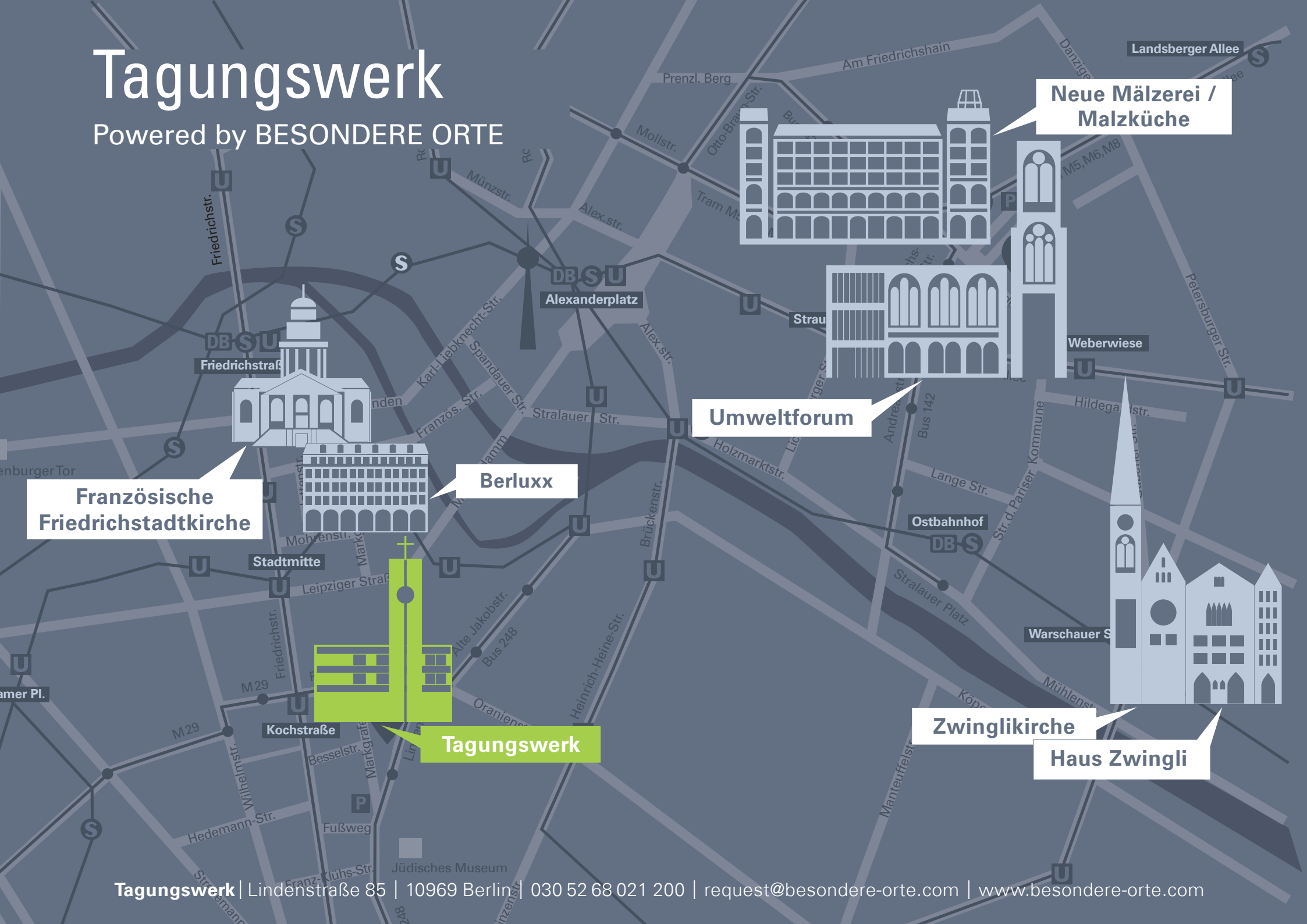


# Tagungswerk

Powered by BESONDERE ORTE



Französische  
Friedrichstadtkirche

Berluxx

Tagungswerk

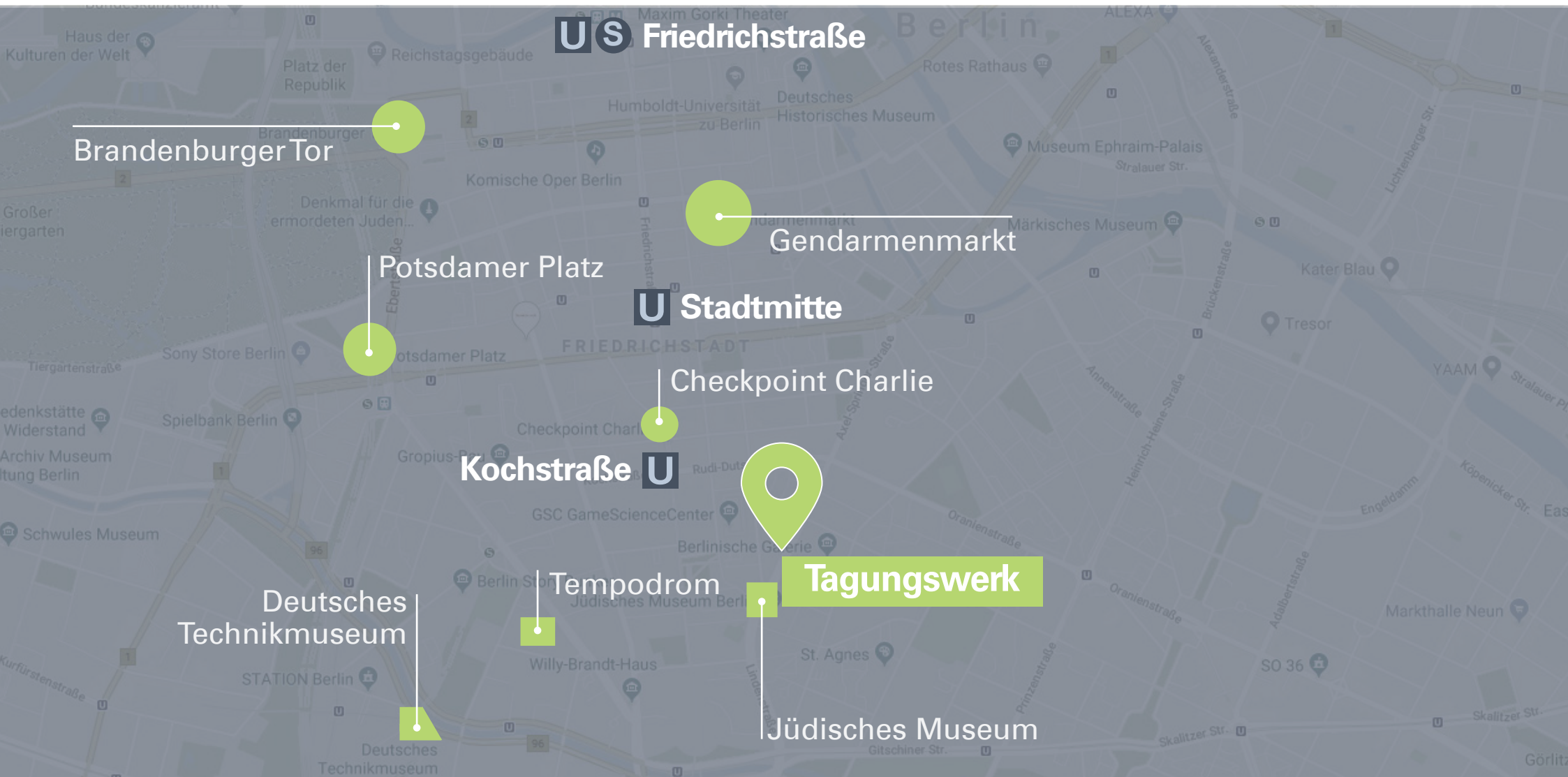
Umweltforum

Neue Mälzerei /  
Malzküche

Zwinglikirche  
Haus Zwingli

# Tagungswerk

Centrally located - close to Checkpoint Charlie



# Tagungswerk

Meeting, conference, workshop, barcamp, event



## New design

Extensive reception and catering space, flooded with light and view to the outside, up-to-date



## Flexible

Divisible hall with a lot of daylight, flexible use with up to **5 workshop rooms**



## Green

Coffee breaks with bio-based products, green electricity, photovoltaic system, combined heat and power (CHP), **EMAS certified**



## Central

Close to Checkpoint Charlie and opposite to the Jewish museum, **300 m from Friedrichstraße**

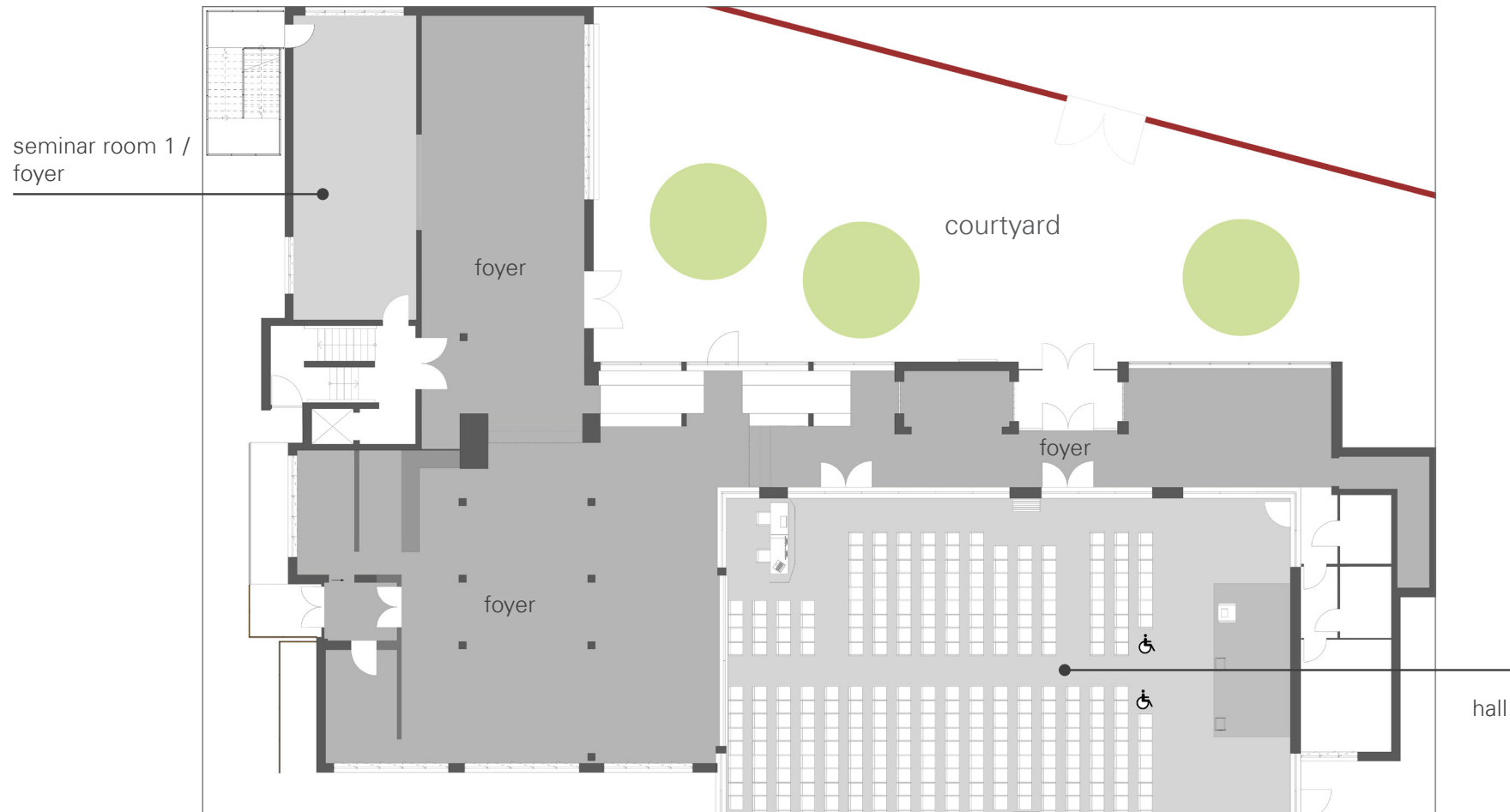
## Open-air

Large terrace with more than one entrance, roof-terrace with **360-degree view**



# Tagungswerk

1.000 m<sup>2</sup> event space for up to 300 people

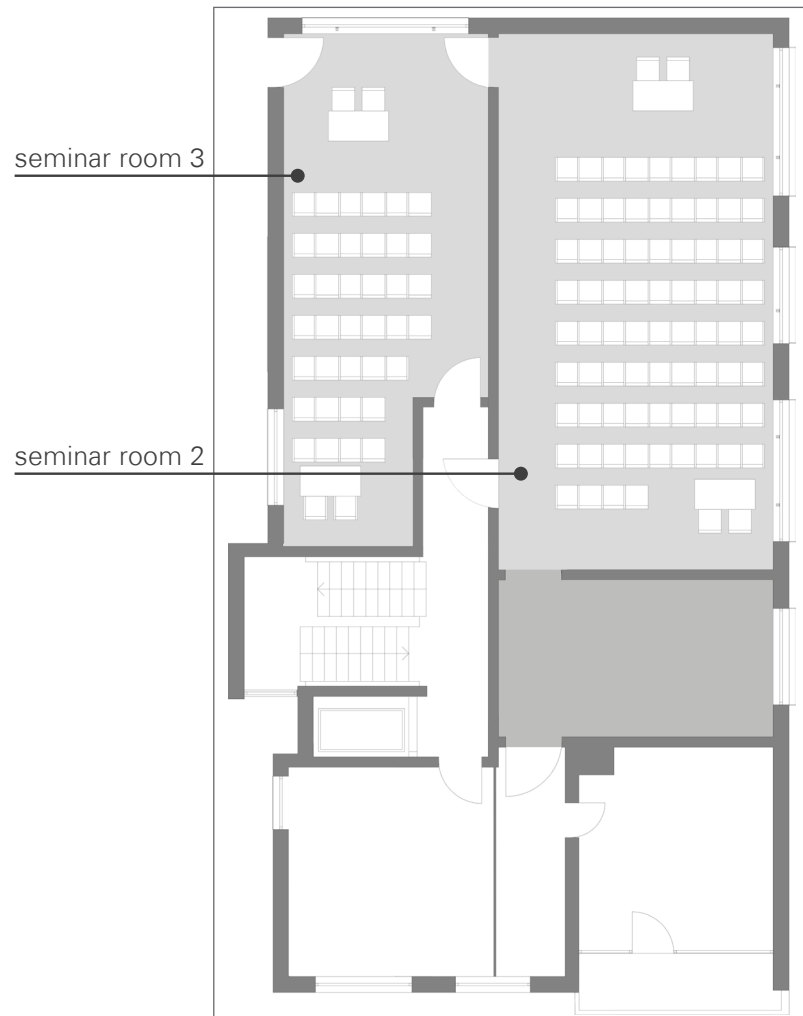


## Ground floor

hall, foyer, seminar room 1, courtyard

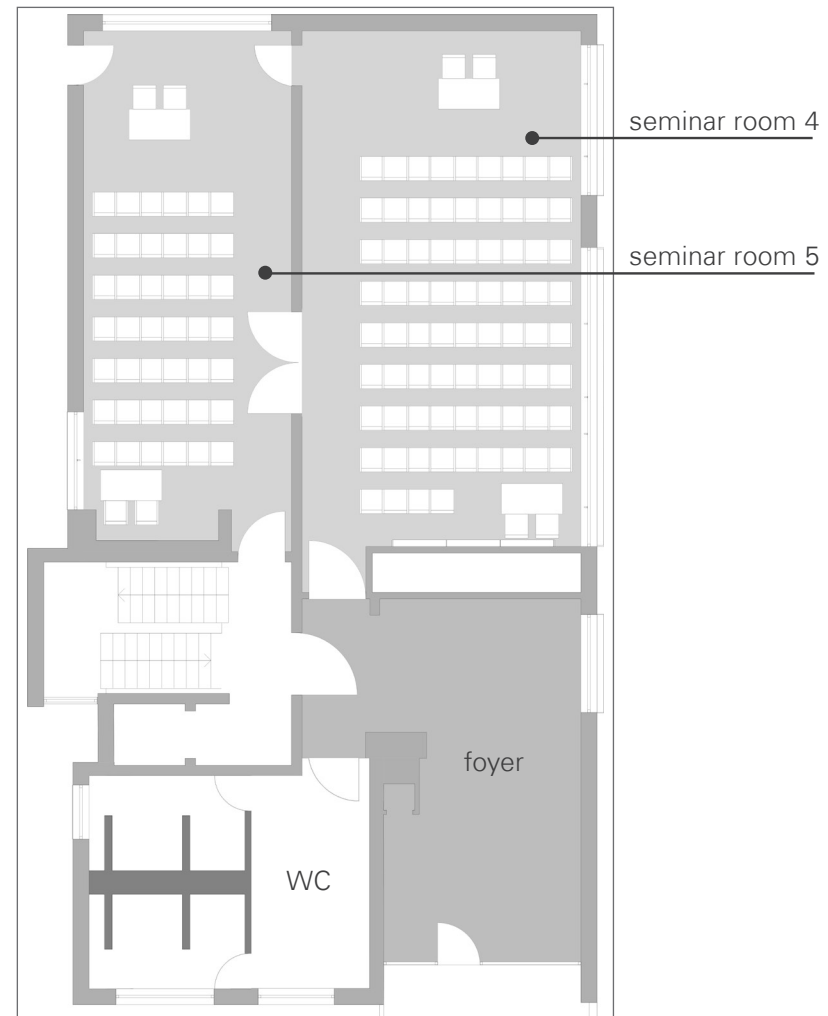
# Tagungswerk

1.000 m<sup>2</sup> event space for up to 300 people



## 1<sup>st</sup> Floor

seminar room 2 and 3



## 2<sup>nd</sup> Floor

seminar room 4 and 5, foyer

# Tagungswerk

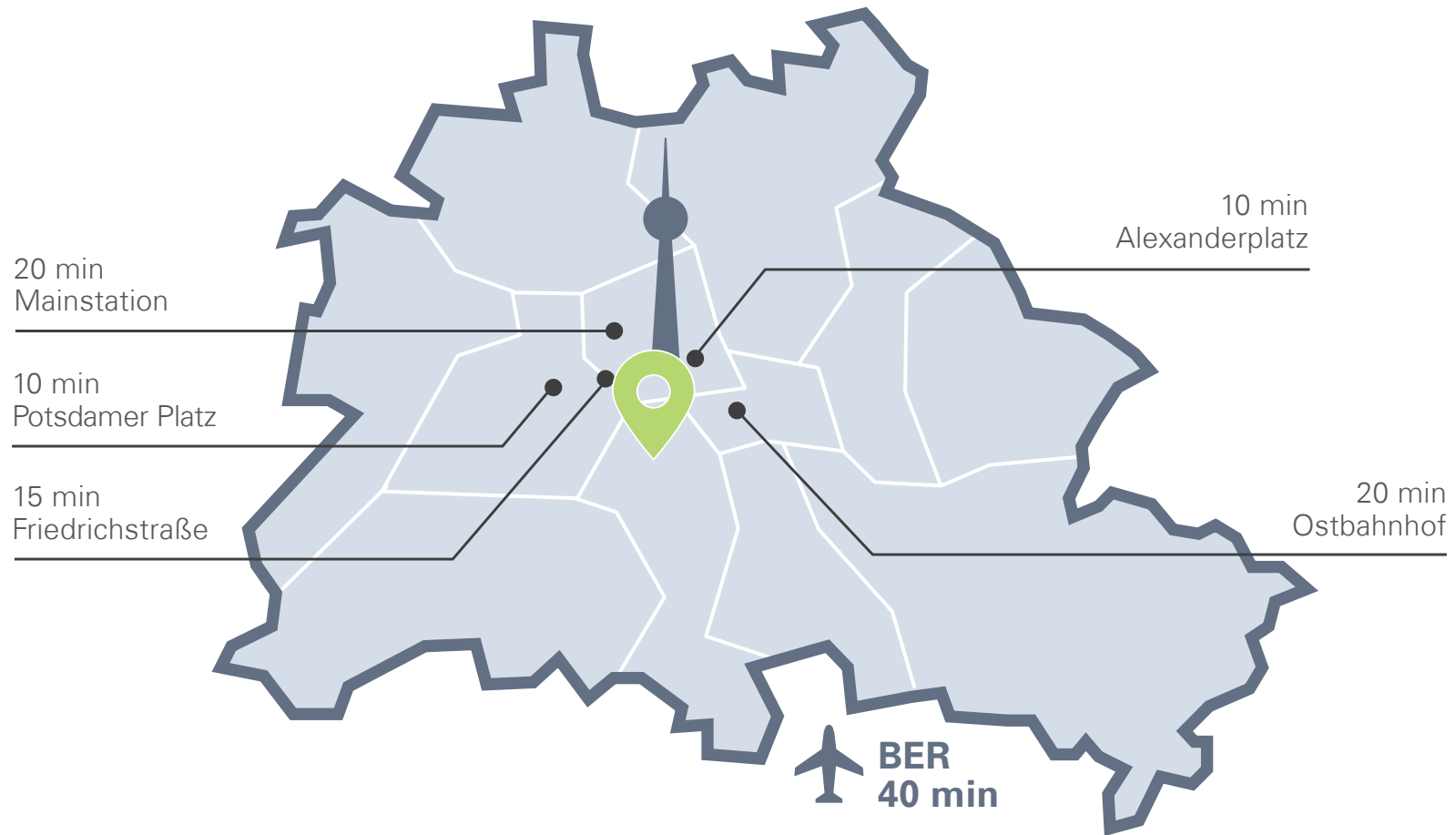
## Data and facts

		■	■	■	■	■	■	■
	floor	m <sup>2</sup>	Row	Parl.	Banq.	U-shape	Circle	Recpt.
hall total	0	292	300	160	140	58	78	200
hall north	0	155	141	78	60	44	52	120
hall south	0	137	105	56	60	35	48	100
foyer	0	300						200
seminar room 1	0	57	48	20	30	22	32	50
seminar room 2	1	80	76	35	50	27	38	80
seminar room 3	1	57	48	20	30	22	32	50
seminar room 4	2	80	76	35	50	27	38	80
seminar room 5	2	57	48	20	30	22	32	50
foyer 2 <sup>nd</sup> floor	2	48						
courtyard	0	175						120
roof top terrace	3	130			60			110



# Tagungswerk

Getting there



**U-Bahn:** U6 to Kochstraße

**S-Bahn:** S 1, 2, 25, 26 to  
Anhalter Bahnhof

**Bus:** 248 to Jüdisches Museum,  
M 29 to Lindenstr./Oranienstr.