



Fact sheet Velodrom

Fact sheet/ venue specifications

Postal & delivery adress

Velodrom
 c/o Velomax Berlin Hallenbetriebs GmbH
 Paul-Heyse-Straße 26
 10407 Berlin
 Germany

Contact

Phone: 030 44304-5
 Fax: 030 44304-709
 E-Mail: info@velomax.de
 Web: www.velodrom.de

General information

Architect Dominique Perrault

Point-symmetric cycling track
 made of Sybirian spruce Length 250 m

Europe' s largest self-supporting steel roof

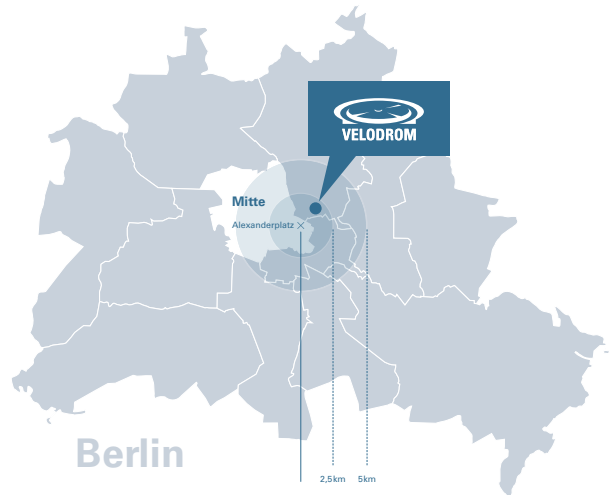
Steel used 3.500 t

Roof diameter 115 m

Bowl diameter 142 m

Total area of property 49.262 m²

Gross floor space 93.320 m²



PARTNER & MITGLIED DES



Main entrance

Arena

General information

Can be fully blacked out

16 permanent food stands

Trucks can enter the event area

Max. floor load of arena and vehicle entrance Equivalent uniform load
 $p=16,7 \text{ kN/m}^2$

Total ceiling load capacity 50 t
(single point max. 1t)

Dimensions

Arena including safety stripe 68 m x 38 m
Approx 2.718 m²

Arena excluding safety stripe 68 m x 44 m
Approx 3.233 m²

Area corridors E0, E1 and foyer Approx 6.675 m²

Ceiling height 13,00 m

Power supply

Arena Over 1.800 kW

Ceiling Over 480 kW

Car park level U1
TV & bus power 1 x 125 A CEE
1 x 63 A CEE
3 x 32 A CEE

Capacities

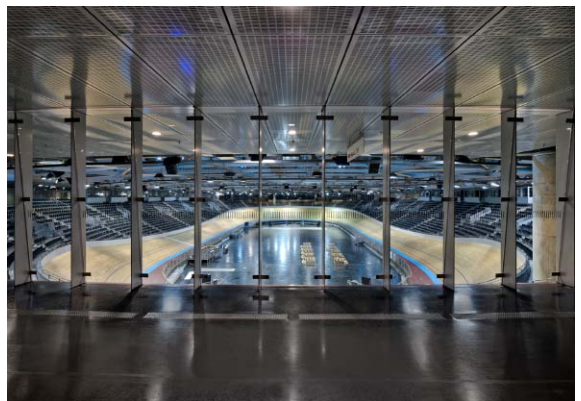
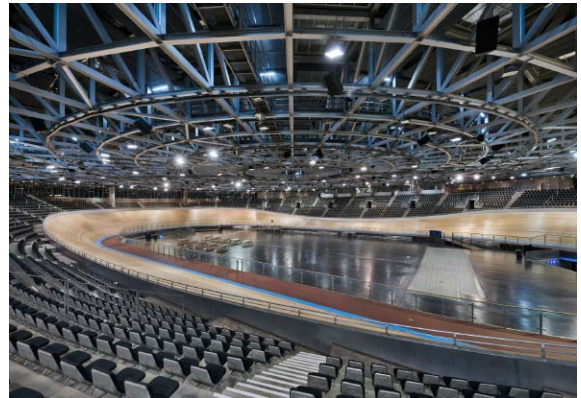
Seats on stands 5.668

Standing audience inner arena Max. 4.904

Standing corridor E1 Max. 1.110

VIP box 6 x 12

Wheelchair Mind. 48



Arena/ Infrastructure

Arena/ Infrastructure

7 offices
19 dressing rooms
10 artist rooms

Crewcatering (95 m²)

1 x 63 A CEE
2 x 32 A CEE
4 x 16 A CEE

Telephone system
Network production area

20 MBit/s

Stage

Mobile stage system with stairs, skirting & railings

Stage height

1,00 m oder 1,50 m

Sound- and lighting system

Decentralized sound system

Floodlights
(cold-start HQI-discharge lamps) 159 x 2 kW
166 x 2 x 400 W
34 x 400 W
40 x 250 W

Total power

474 kW

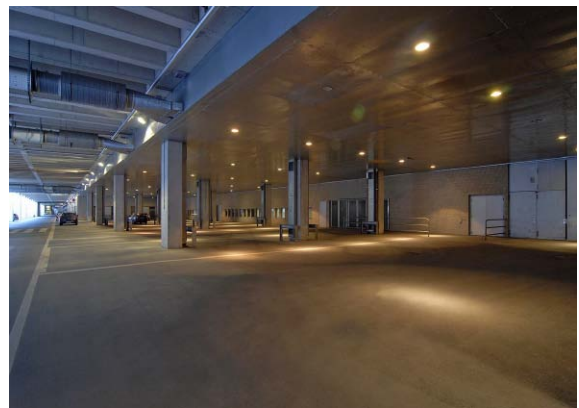
networks

125 Mbit/s bandwidth Venue

-partitioned in several VLAN
-additional bandwidths options possible



Production office

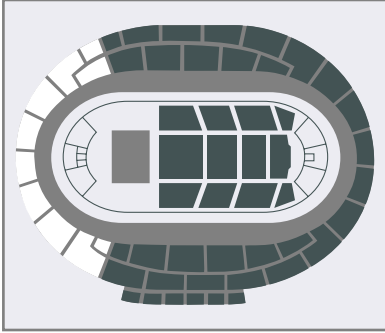


Car park level U1

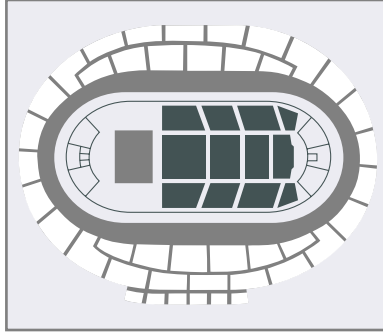


Artist room

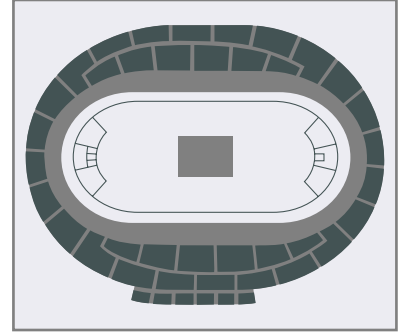
Seating arrangements



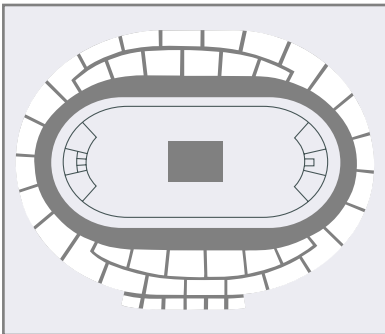
1. Row seating with front stage
Stage area: 18 x 12 m
Capacity: approx. 6.300



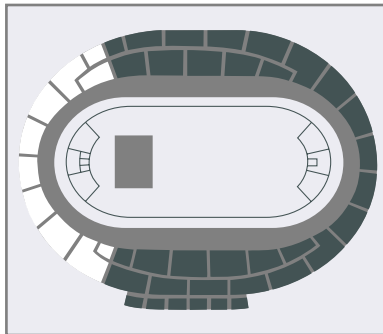
1.1. Row seating, middle variant Variante mit Front-Bühne
Stage area: 18 x 12 m
Capacity: approx. 2.600



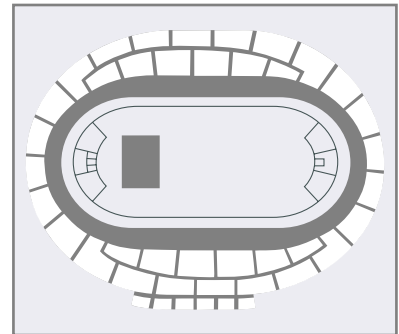
2. Concert with center stage, no seating
Stage area: 15 x 15 m
Capacity: approx. 12.000



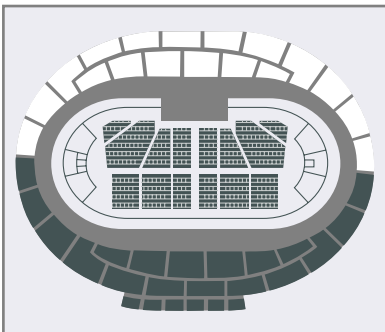
2.1. Concert with center stage, middle variant, no seating
Stage area: 15 x 15 m
Capacity: approx. 4.900



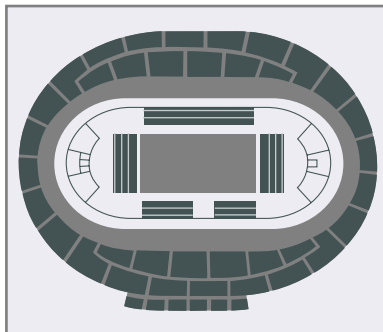
3. Concert with front stage, no seating
Stage area: 18 x 12 m
Capacity: approx. 9.000



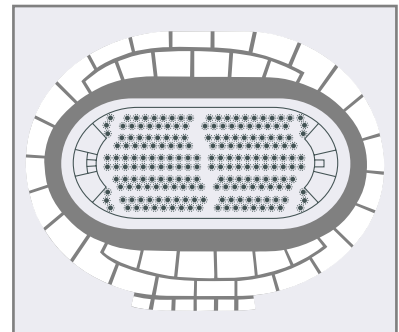
3.1. Concert with front stage, middle variant, no seating
Stage area: 18 x 12 m
Capacity: approx. 4.900



4. Parliamentary seating with side stage
Stage area: 20 x 7 m
Capacity: approx. 1.200



5. Sporting event with additional platforms
Capacity: approx. 8.200



6. Gala event with seating at round tables
Capacity: approx. 1.900

Corridors level E0 & E1

General information

Cloakrooms	8
Food stands (both levels)	16
Area corridor level E0	2.820 m ²
Area corridor level E1	2.820 m ²

Foyer

Main foyer

Width	21,30 m
Length	23,80 m
Area	500 m ²
Power supply	1 x 32 A CEE 2 x 16 A CEE
Capacity row seating	250 pax
Capacity no seating	500 pax

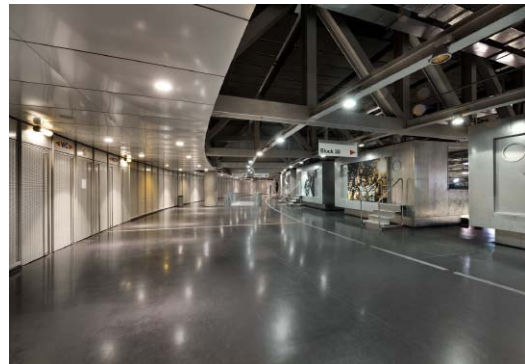
Side foyers

Width	9,50 m
Length	24,50 m
Area	je 254 m ²
Power supply	2 x 32 A CEE
Capacity row seating	180 pax
Capacity no seating	315 pax

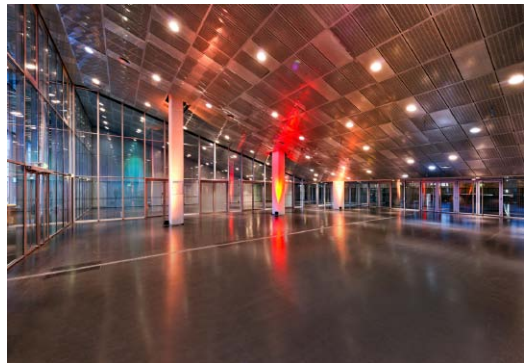
Water supply Fresh water available
 Wastewater connection



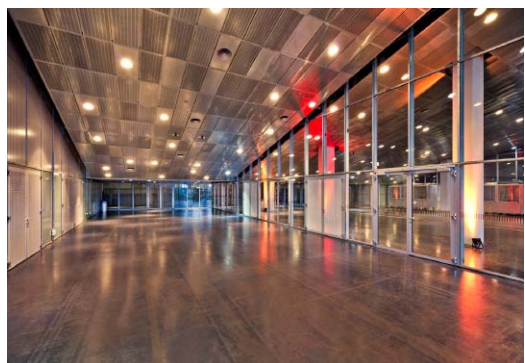
Corridor level E0



Corridor level E1



Main foyer, main entrance



Side foyer

Press area

Press room A

Width	9,40 m
Length	15,90 m
Free length	13,75 m
Height	2,95 m
Area	150 m ²
Power supply	1 x 32 A CEE 16 A Schuko
Capacity row seating	154 pax
Capacity no seating	300 pax



Press room B

Width	10,52 m
Length	12,30 m
Free length	10,85 m
Height	2,95 m
Area	130 m ²
Power supply	1 x 32 A CEE 16 A Schuko
Capacity row seating	138 pax
Capacity no seating	250 pax



Seelenbinderhalle

General information

Can be divided with movable privacy walls into up to three sections

Rigging points 18 points 10 kN each

Maximum floor load 5 kN/ m²

Power supply 2 x 125 A CEE

Changing rooms 6

Dimensions

Free width 27 m

Free length 49 m

Area 1.215 m²

Height 6 m

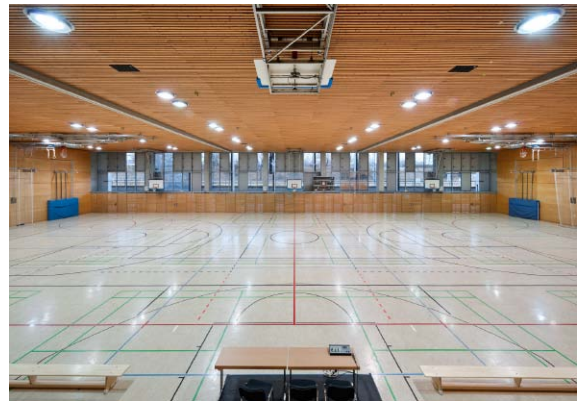
Capacities

Seats on audience stand 198 pax

Capacity no seating 945 pax

Capacity row seating 945 pax

Capacity parliamentary seating 764 pax



Gallery room

General information

Rigging points 8 Punkte à 10 kN

Power supply 2 x 63 A CEE
2 x 32 A CEE
4 x 16 A CEE

Capacity no seating 1.255 pax

Capacity row seating 500 pax

Dimensions

Free width 20 m

Free length 24,50 m

Area 590 m²

Height 7,30 m

Height underneath gallery 5,70 m

Height of gallery lights 3,40 m

Free length gallery 24,50 m

