

EVENTS

at aletto Hotel Potsdamer Platz

We welcome you!

Dear guests,

The aletto Hotel Potsdamer Platz offers you a unique atmosphere and individual service that will ensure the success of your event, be it a conference, banquet, seminar or family celebration.

Our three spacious conference rooms are ideal for meetings, parties, seminars and events for up to 120 people*.

They are equipped with the latest technology to meet your individual needs. Our service staff and chef will be happy to address your personal requirements and help make your event an unforgettable experience.

Another highlight is our exclusive Vitra Lounge on the top floor of the hotel and the adjoining rooftop terrace with unique panoramic views over the roofs of Berlin.

The hotel features premium amenities from renowned brands such as Vitra and Artemide.

What we offer:



Four event rooms for 1-120* people



227 air conditioned rooms for your guests



Free Wi-Fi throughout the entire building



Rooftop terrace with panoramic views over Berlin and adjoining exclusive Vitra Lounge



Modern meeting and conference facilities with adaptable layout and state-of-the-art technology



Individual catering for your event



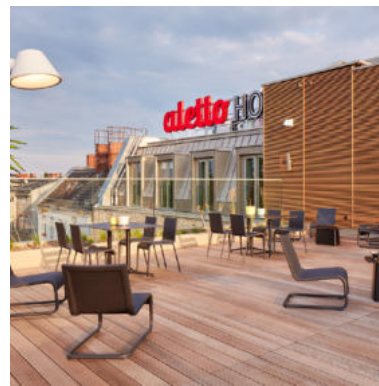
Ten-minute walk from Potsdamer Platz

We will be pleased to assist you in planning and implementing your event.

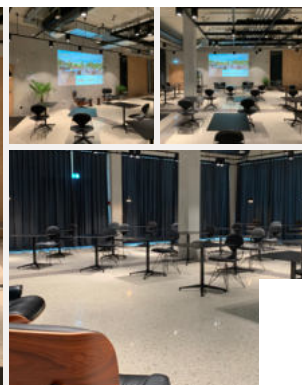
ROOMS



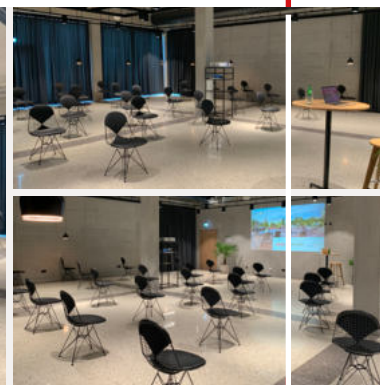
Vitra Lounge 24 m²
Table seating: 8 people



Dachterrasse 110 m²
On request



STAGE
180 m²



Parliamentary seating
arrangement with tables:
60 people + 2 speakers

Parliamentary seating
arrangement:
120 people + 2 speakers



Meeting room B1 65 m²
Parliamentary seating
arrangement: 26 people



Meeting room B2 190 m²
On request



TECHNICAL EQUIPMENT

You can reserve any technical equipment you need for your event::

- | Flipchart 10,00 €/day
- | Pinboard 10,00 €/day
- | Presentation case 25,00 €/day
- | Projector 150,00 €/day
- | Screen 95,00 €/day
- | Speakers & microphone 40,00 €/day

Additional event equipment available from our partners on request.

ASK OUR TEAM

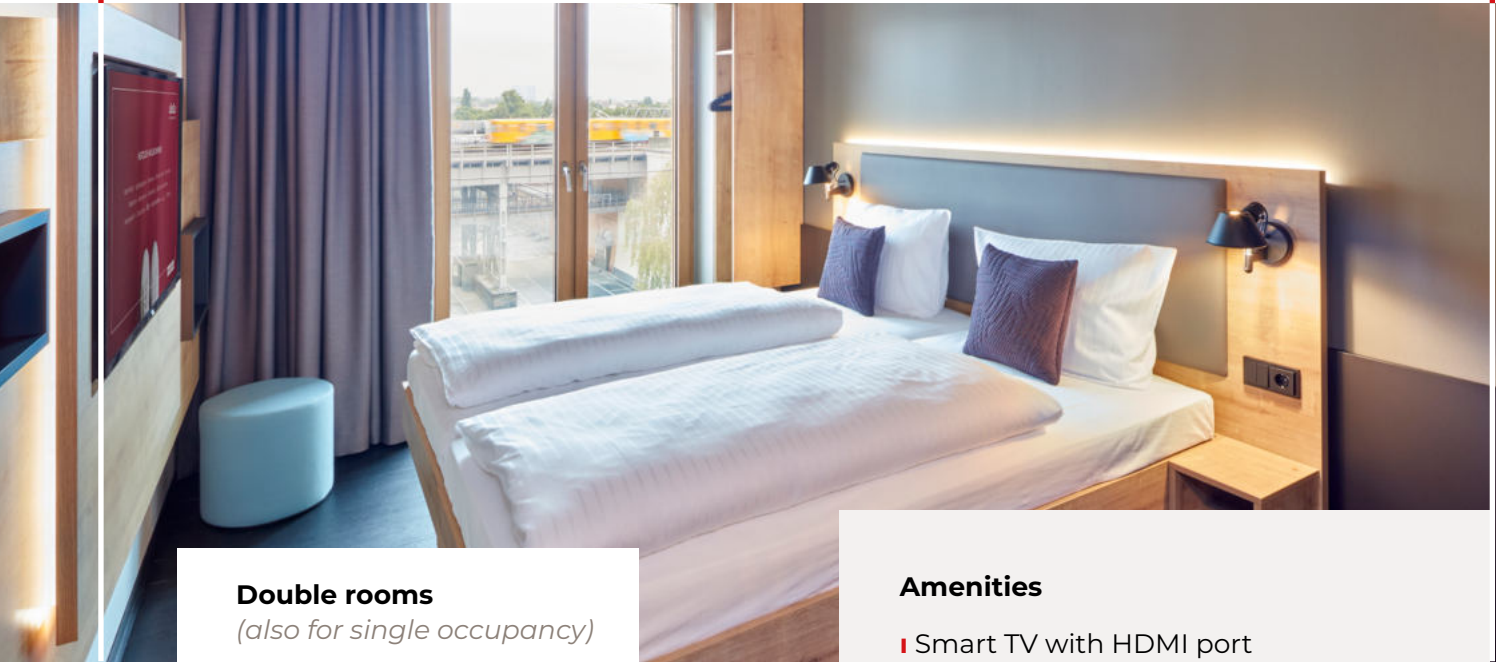
about the conference and catering packages for your event at events@aletto.de.

VISIT US

Discover our hotel in 360° perspective.



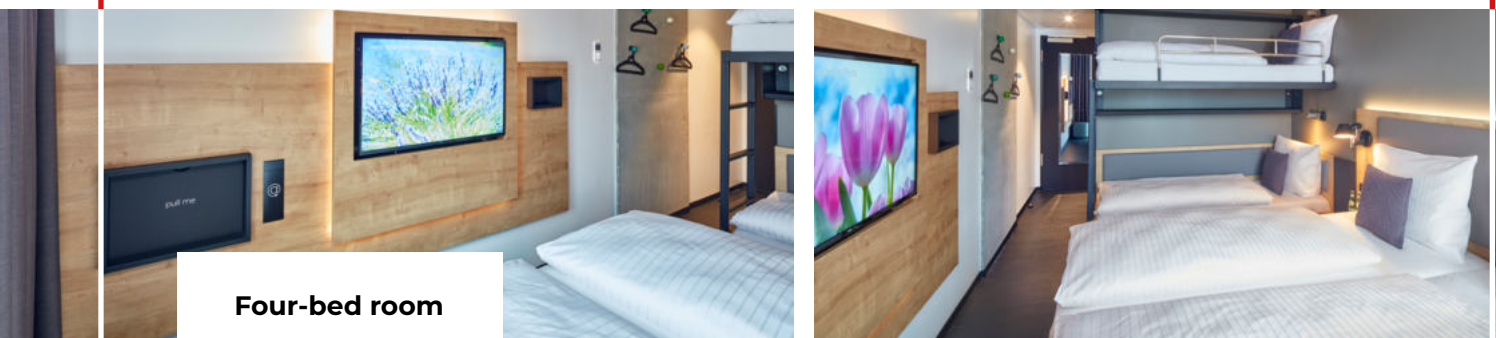
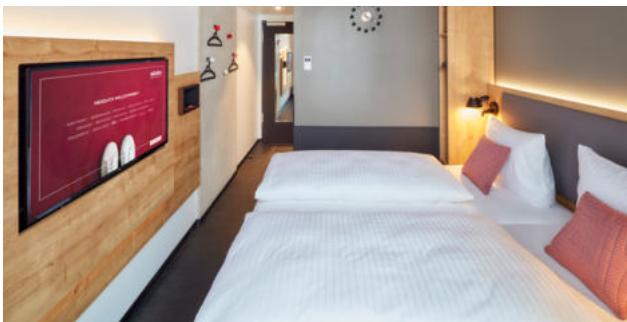
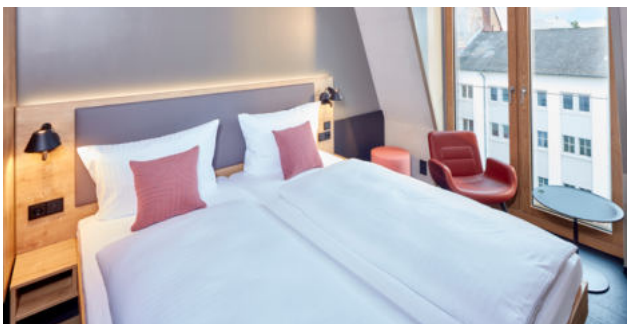
ROOMS



Double rooms
(also for single occupancy)

Amenities

- Smart TV with HDMI port and desk
- Individually controlled air conditioning
- Ventilation with fresh air supply
- USB sockets
- Premium designer furniture by Vitra
- Floor-to-ceiling soundproof windows
- Room access with keycard system
- In-room safe
- Toiletries included
- Shower room with toilet, hair dryer, underfloor heating and cosmetic mirror
- Digital room contro



Four-bed room

FOOD AND DRINK



acucina

ITALIANA

acucina Italiana is part of our hybrid concept, which combines old favourites with new trends. Our new key development is our speciality pizza 'al Taglio' – sold by weight alongside other Italian products. Our guests can put together a combination of different pizzas and try them all.

Bar

Would you like to have a relaxing drink in the evening? Our bar features a varied menu and a wide range of carefully selected Italian wines, gin and tonics, cleverly crafted cocktails and much more! Our bartenders will be happy to help you create your favourite drink!



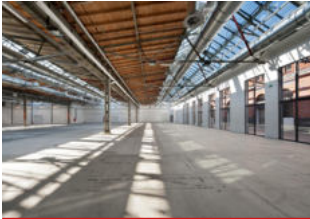
We Proudly Serve Starbucks

The aletto Potsdamer Platz is the first hotel in Europe where you can enjoy selected coffee specialities from We Proudly Serve Starbucks at the breakfast buffet. Our bar also offers everything from Americano and flat white to iced caffè mocha and caramel frappuccino. Our spacious terrace with adjoining garden is the ideal spot for enjoying your coffee.

IN THE VICINITY



aletto
HOTEL POTSDAMER PLATZ



Berlin main station
(20m)



German Museum of Technology
(300m)



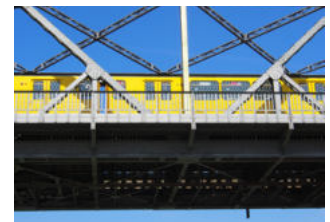
Tempodrom
(900m)



New National Gallery
(1,2km)



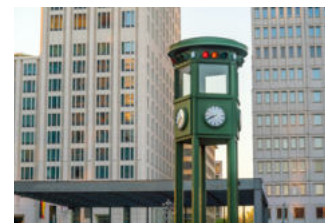
Checkpoint Charly
(1,6 km)



Underground station Gleisdreieck
(50m)



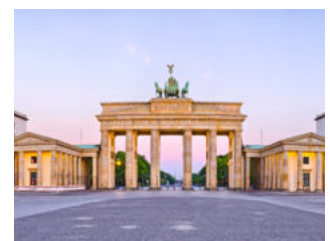
Gleisdreieck Park
(350m)



Potsdamer Platz
(950m)



Mall of Berlin
(1,2 km)



Brandenburg Gate
(2 km)

HOW TO FIND US



[Luckenwalder Straße 12 · 10963 Berlin](#)

U Gleisdreieck



Tel.: +49 (0)30 233214300

E-Mail: potsdamerplatz@aletto.de

aletto

HOTEL POTSDAMER PLATZ



LOCATION / DIRECTIONS / PARKING



A paid, video-monitored car park is 150 metres away.

Car park at Gleisdreieck, Schöneberger Ufer 3, 10785 Berlin.

[aletto Hotel Potsdamer Platz](#)



FROM MAIN STATION (WITH PUBLIC TRANSPORT)

From the main station, take one of the S-Bahn lines S5, S3, S7 or S9 in the direction of S Westkreuz (Berlin). You can also take one of the regional trains – lines RE1, RE2, RE7 or RB14. Ride three stops to S+U Zoologischer Garten, then change to underground line 2 in the direction of Pankow. You will get to the underground station Gleisdreieck in just a few stops. When you reach the Luckenwalder Strasse exit, walk 50 m to the right and your destination will be on your left.

Total travel time: approx. 15 minutes



FROM AIRPORT (WITH PUBLIC TRANSPORT)

Berlin Brandenburg Airport (BER):

Terminals 1-2: From Terminals 1-2 please follow the signs to the S-Bahn station „Flughafen BER - Terminal 1-2“.

Terminal 5: From Terminal 5 please follow the signs to the S-Bahn station „Flughafen BER - Terminal 5“.

Take the S9 in the direction of Spandau Bhf and get off at Warschauer Straße. Follow the signs to Warschauer Straße underground station and take the U1 or U3 in the direction of Krumme Lanke or Uhlandstraße. Get off at the Gleisdreieck underground station. Once you reach the Luckenwalder Straße exit, please walk 50m to the right and your destination will be on your left.

Total travel time: approx. 45 minutes



FROM ZOB (WITH PUBLIC TRANSPORT)

You will arrive with the long-distance bus at the Messe Nord/ICC bus station. Please walk along the Dresselstraße, passing the BMW Motorrad Zentrum Berlin, and then turn right on Messedamm (400m). Then walk up Messedamm for 200m until you arrive at Kaiserdamm underground station. There you should take the U2 in the direction of S+U Pankow. Travel a few stops (approx. 15 min.) and then get off at the Gleisdreieck underground station. Once you reach the Luckenwalder Straße exit, please walk 50m to the right and your destination will be on your left.

Total travel time: approx. 20 minutes

