



FIRESPACE

by Zimmer

www.firespace.berlin
+49 (0)30 98 398 664
we@firespace.berlin

About the Firespace

The Venue with a special history
— A truly unique experience

The first light bulb in Germany was once produced here in the center of Berlin Mitte. Located in these historic Edison courtyards, the firespace eventlocation is unique. Once the fire station of the Edison factories, then a 2-star restaurant where chancellors and presidents have celebrated.

Six meter high capped ceilings, exposed brick walls with state-of-the-art lighting and sound technology create an impressive ambience. Large windows flood this special room with natural light and create an inspiring atmosphere.



The Venue

Setup for a work event where you can connect with your colleagues and listen to presentations



The Venue

You can set up different kinds of tables for lovely dinner parties



The Venue

You can completely customize the room as you need it



Terrace

You can have nice conversations in our outside area at the terrace



Key Facts

The venue is equipped with high-quality technology that is ideal for a wide range of event variants.

Key Facts:

- 280 m² Eventspace (Indoor)
- 50 m² outdoor area with a terrace in the courtyard of the historic site
- Electric blackout blind
- High performance ventilation technology
- 6 m high ceiling
- Portable bar
- Disabled toilet

Technical Equipment:

- On-demand equipment
- 100" widescreen LED display
- High End Denon 4.1 Soundsystem
- 2 wireless headsets
- 92" portable Touchscreen
- 100 Mbit W-lan
- Video calling system
- Whiteboard with toolbox
- Appropriate lighting mood
- Portable stage (2m x 4m)
- Brunner + Vitra furniture


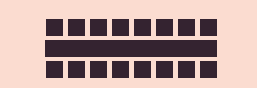



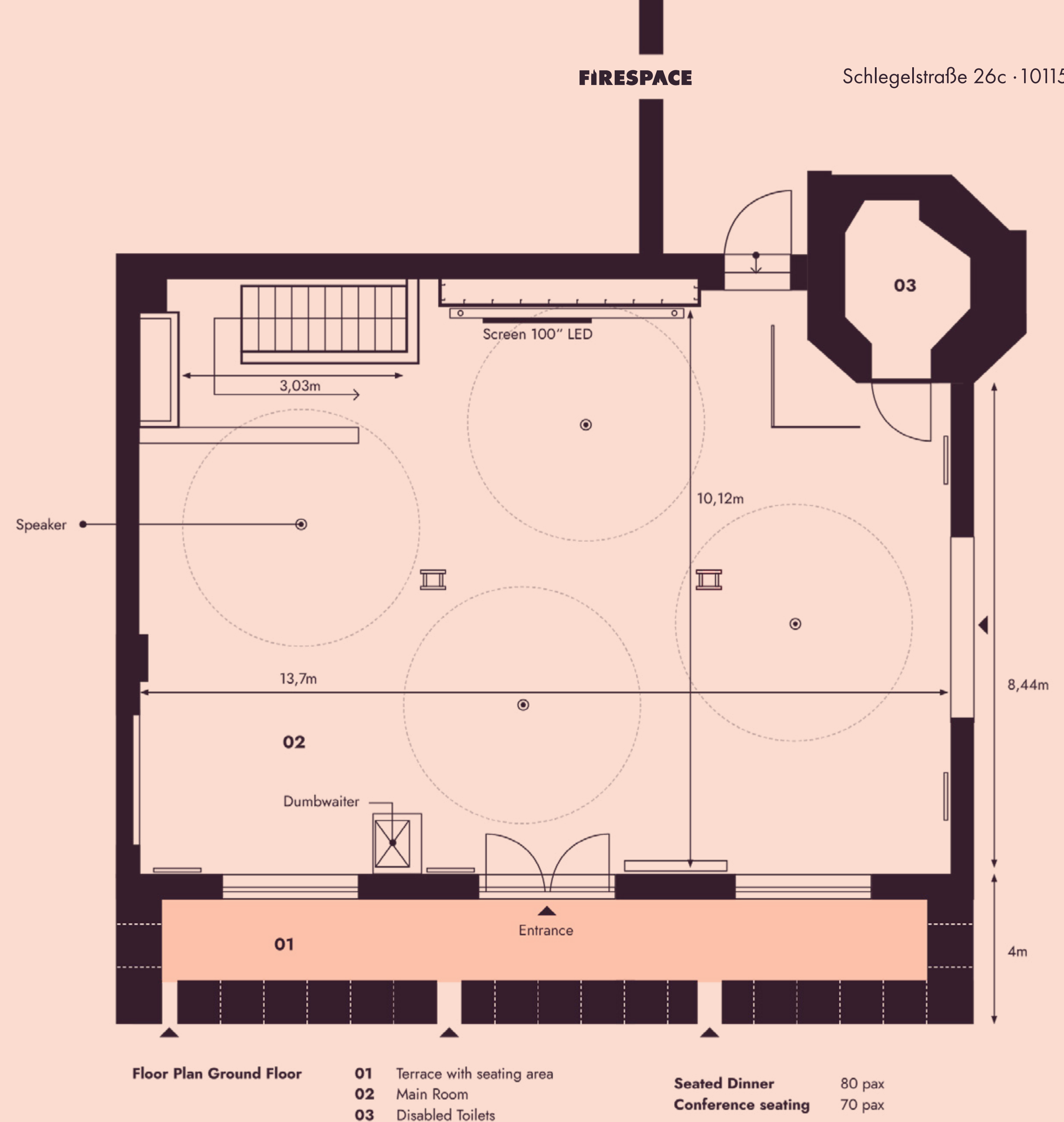
Floor Plan and Features

Ground Floor

The Firespace's premises are incredibly flexible. This means you can set up the room according to your taste, from work events to dinner parties or individual events.

We are a full-service location and generally offer events including catering, drinks, audio-visual equipment and staff.

Seat Layout	Pax	Description
	75	Rows
	96	Banquet – long table
	72	Banquet – round tables
	199	Standing (max.)



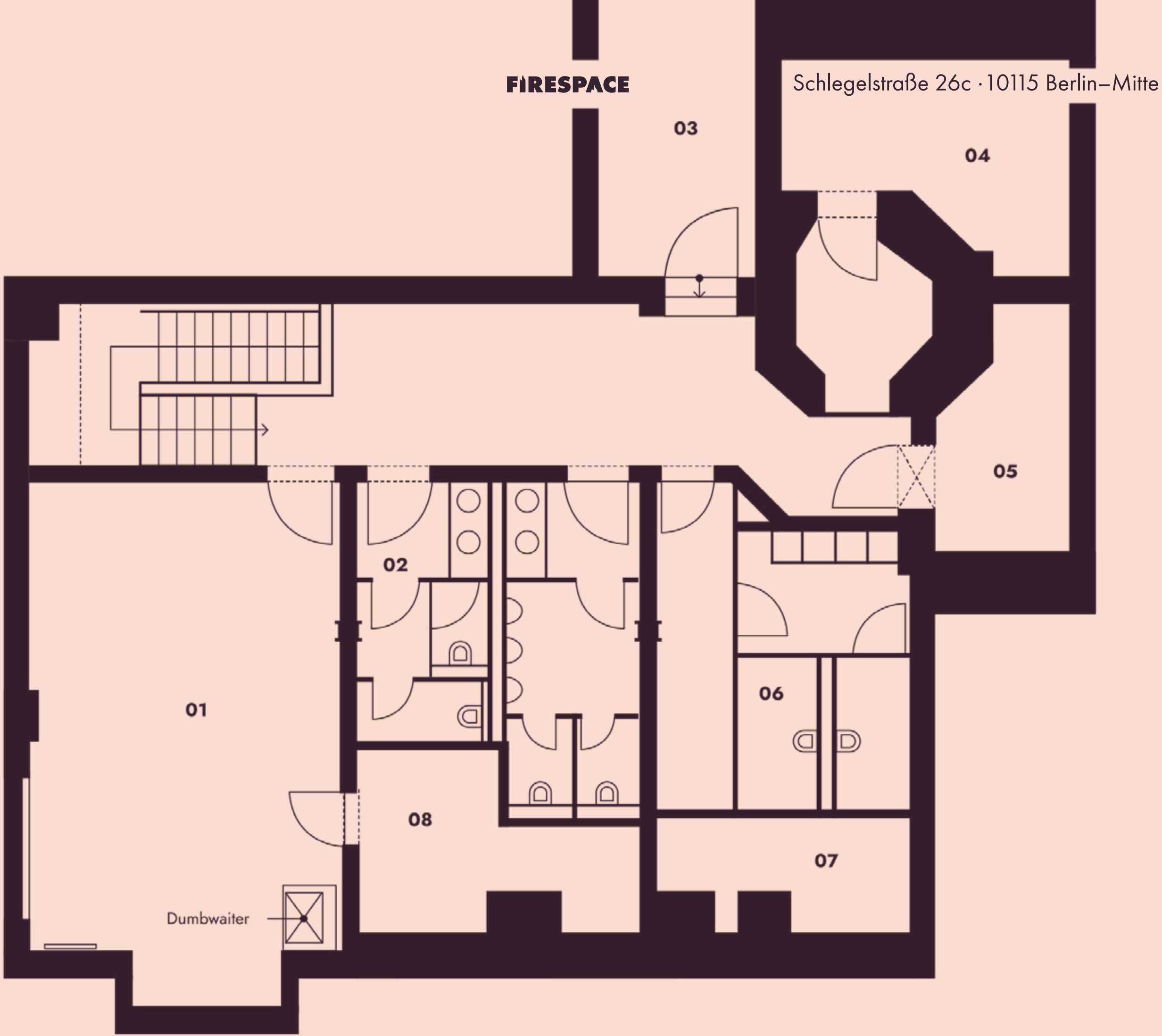
Floor Plan and Features

Basement

The spacious basement of the venue has a large kitchen area as well as various storage rooms and separate toilets and changing rooms for staff to ensure that the event runs smoothly and relaxed.

There is also a second toilet area here for event visitors.

As a highlight, the kitchen has a dumbwaiter with which everything can be sent upstairs quickly.



Floor Plan Basement	01 Kitchen	04 Warehouse kitchen	07 Changing room
	02 Toilets 1	05 House connection room	08 Warehouse kitchen
	03 Staircase	06 Toilets 2	

Have you heard about our Packages?

In case you need some inspiration:
We offer some hot event packages.

You can choose from three different packages or you can simply create your own event according to your individual ideas.

Do you need help with the implementation? We are happy to help and can offer a wide range of services to you.

Conference



Details:

- 280m² Eventspace
- Hospitality Manager
- Catering + Drinks
- High Tech On-demand equipment

Starting 99,00 €
daily allowance per person

Dinner



Details:

- 280m² Eventspace
- Hospitality Manager
- Staff
- Catering + Drinks
- High Tech On-demand equipment

Starting 119,00 €
daily allowance per person

Individual



Details:

You can use the entire location and set it up however you like.

We provide you with our extensive services and equipment.

Individual Price
daily allowance per person

Zinnober

Our extra service: Floral highlights everywhere – we know what's important. Through extraordinary room installations and individual, floral custom-made products, we present your brand exactly as desired and authentically at your event.

Flowers create connection, maintain relationships and bring joy. They create atmosphere, draw images, are splashes of color in an environment or even the environment itself. For us, designing with flowers means passion and longing at the same time — and not just decoration.

We are experts in interpreting space and recognizing needs. We know about shapes and colors, want to be pioneers and constants, create bold designs and emphasize what already exists.

With this great mission, working as seasonally and sustainably as possible is our priority.



Known from:

Radio eins rbb / ELLE / CREME GUIDES / Der Tagesspiegel

Selected clients:

Daniel Wellington / L'Occitane / Vero Moda / Philippa Werz / Meliã Berlin / Biontech

You can find a [lookbook of our floral event equipment here.](#)

The team behind the Firespace

With us you have come to exactly the right place — Where creative design and an eye for detail meets analytical thinking and clear structures.

Every project has a dedicated contact person. This means less stress for you and a deeper understanding of the project for us. For us you are, first and foremost, partners. Successful together in the long term, no matter what you plan.



LUKAS is a state-certified designer for floral art with a special focus on high-quality floral arrangements and event floristry. With his eye for detail, he takes care of the conception and implementation of the designs. Luka's work is characterized by a modern, reduced style.



TIM is a qualified industrial engineer and numerical expert, he is a permanent contact and customer advisor for everything related to logistics. With a lot of entrepreneurial experience and passion, he is responsible for the entire value chain, because defined processes and clear structures are his passion.

Contact

Would you like to take a look at the venue with us? No problem! Simply book an appointment via **Calendly**.

Firespace

www.firespace.berlin
+49 (0)30 98 398 664
we@firespace.berlin

Schlegelstraße 26c
10115 Berlin–Mitte

Zinnober

www.zinnober-blumen.de
+49 (0)30 98 398 664
we@zinnober-blumen.de

[@zinnoberblumen](https://www.instagram.com/zinnoberblumen)

Chausseestraße 26
10115 Berlin–Mitte